

Christmas Cracker 1

Oh no! Santa's elves have been kidnapped! The Grinch has locked them up inside Rudolph's stable and Santa is all the way across the square in his workshop completely unaware!

Luckily one of the wiser elves has an idea that could help them send a message to the big man (if he notices that is!).

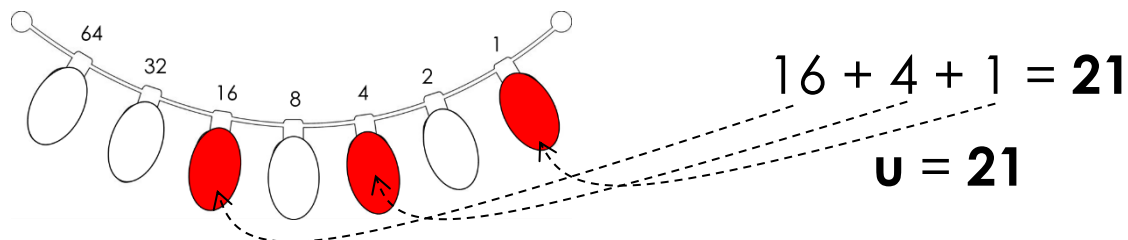
A short length of 7 working fairy lights (attached in parallel) are hanging above the stable window, with removable bulbs. By removing the correct bulbs, the elves have realised that they can send coded messages to Santa and ask him for help!

Task: Work out what message they have sent Santa

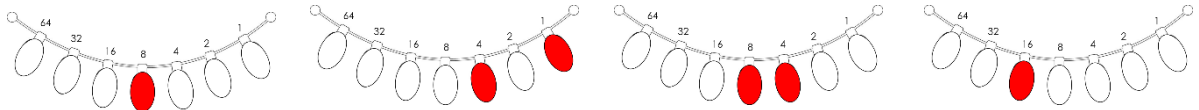
Character Codes:

1	2	3	4	5	6	7	8	9	10	11	12	13
a	b	c	d	e	f	g	h	i	j	k	l	m
14	15	16	17	18	19	20	21	22	23	24	25	26
n	o	p	q	r	s	t	u	v	w	x	y	z

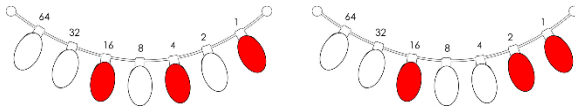
Example: Binary Representation of the letter 'u'



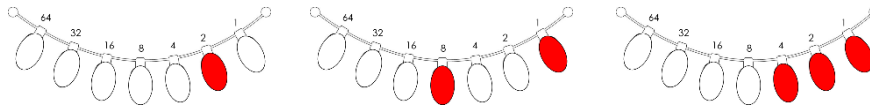
Word 1:



Word 2:



Word 3:



Word 4:

